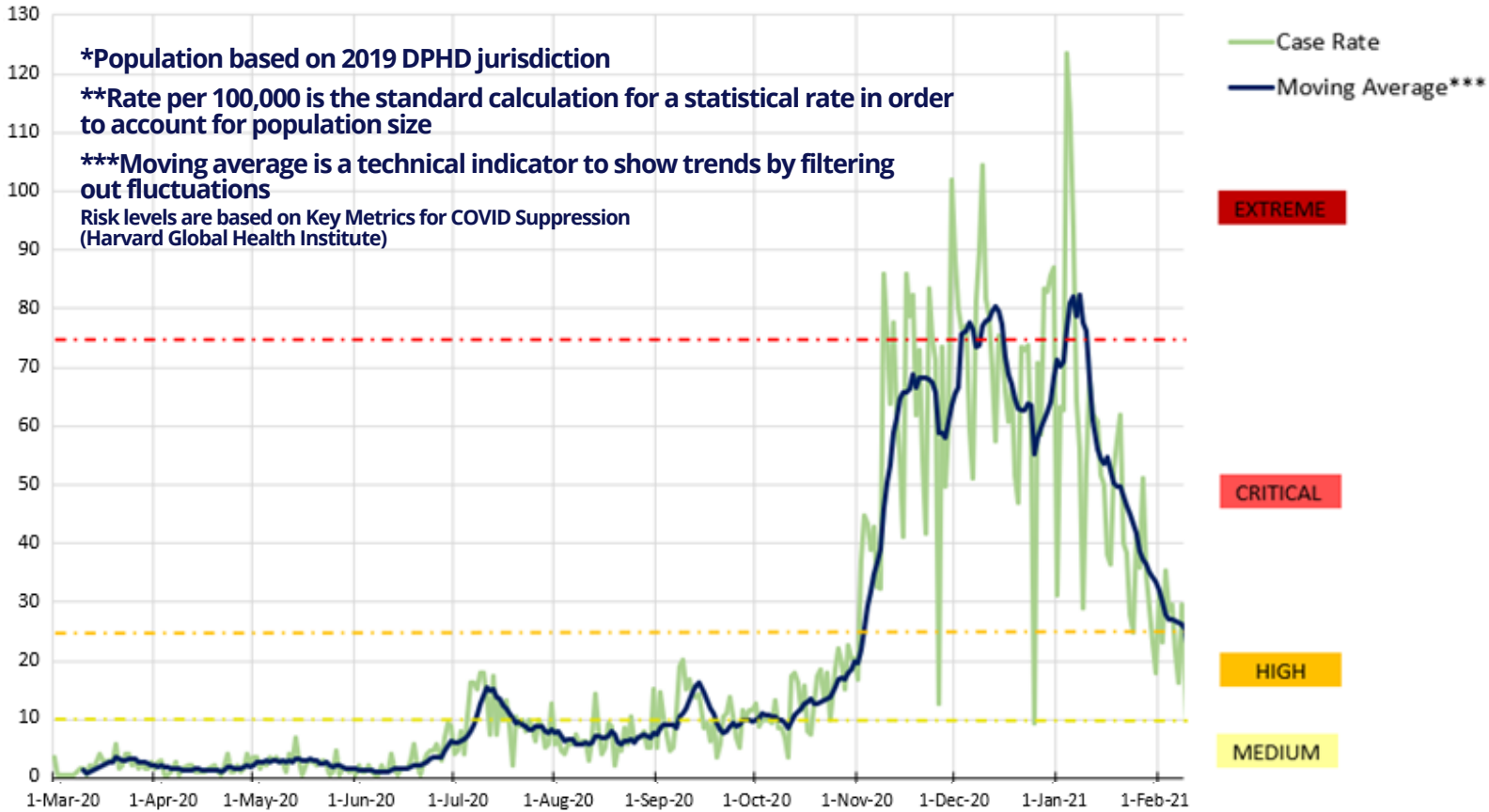


# COVID-19 TRENDS REPORT

AS OF FRIDAY FEB. 12, 2021

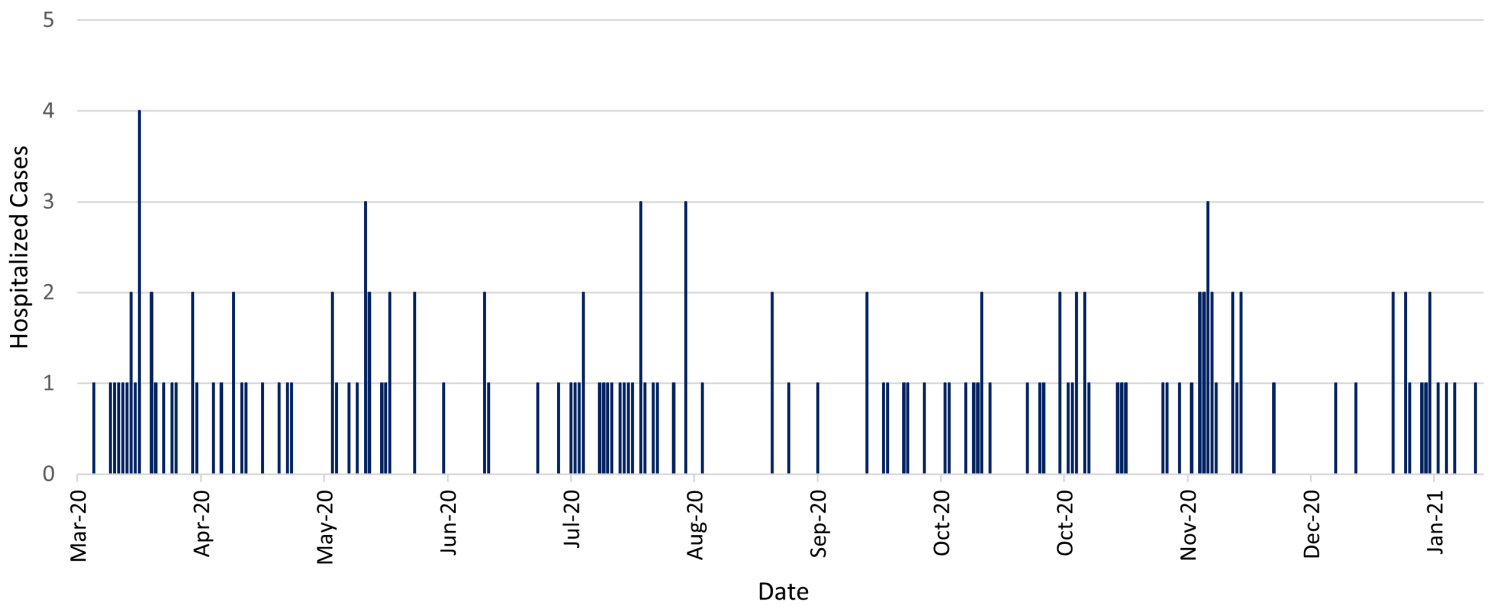
## HEALTH DISTRICT\* COVID-19 DAILY CASE RATE PER 100,000 POPULATION\*\*



## HEALTH DISTRICT DAILY HOSPITALIZATIONS

\*DATA AS OF 2/10/2021

■ Daily Cases



## HEALTH DISTRICT COVID-19 DEATHS

\*DATA AS OF 2/10/2021

■ Deceased Cases

